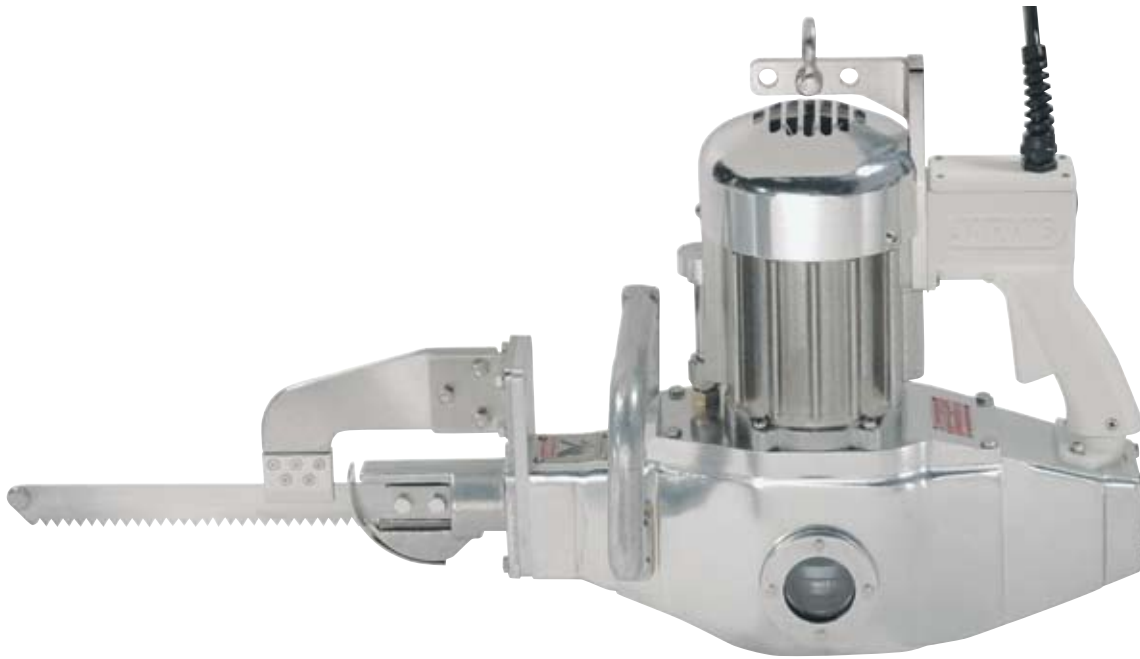


BEEF BRISKET SAW

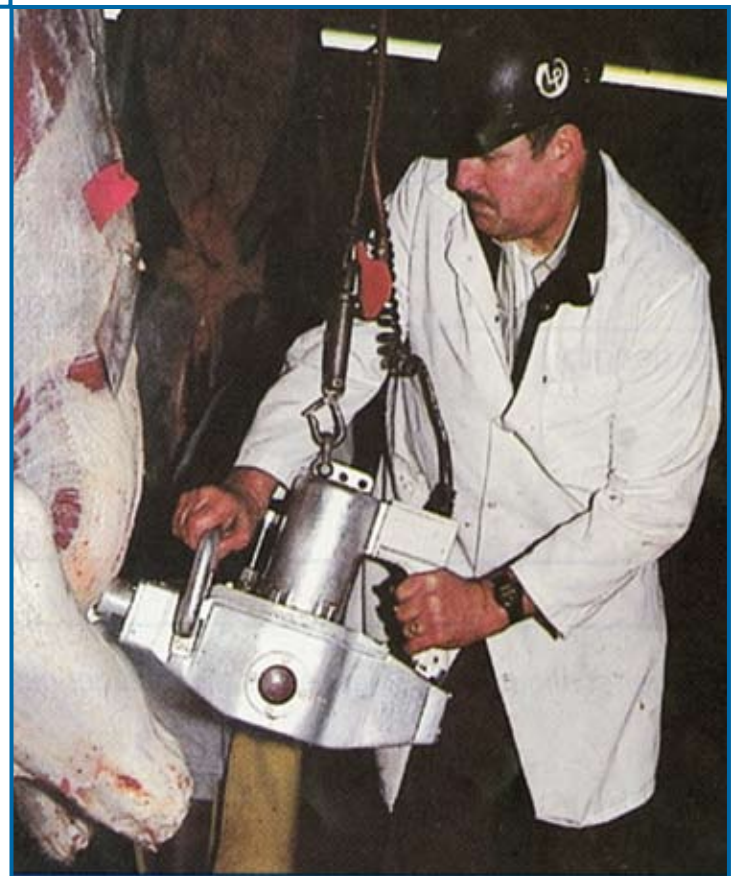
Model MG-1E, 1E-FQ, 1E-HS



**The Jarvis Model MG-1E -
electrically powered brisket saw for beef.**

JARVIS

- The powerful, high-performance MG-1E is designed to cut beef briskets quickly - only 3 seconds.
- Small and maneuverable for optimum handling.
- Smooth and quiet for less operator fatigue.
- Minimal maintenance due to the oil bath lubricated drive.
- 1.9 horsepower, totally enclosed, 3 phase motor for optimum performance.
- Quiet - less than 85 dB.
- Lightweight - only 65 lbs / 29.5 kg (brisket saws), 77 lbs / 35 kg (forequarter saws).
- Meets international requirements for safety and hygiene.



SMOOTH - FAST - DURABLE

BEEF BRISKET SAW

Model MG-1E, 1E-FQ, 1E-HS

Specifications

Drive Electric

Model MG-1E

Motor Power	1.9 hp	1400 W
Operating Voltage	415 / 380 / 220 / 200 / 115 / 42 V 3 phase, 50 Hz	
Cut Speed	575 / 460 / 380 / 230 / 208 / 50 V, 3 phase, 60 Hz	
50 Hz	903 ft / min	275 m / min
60 Hz	1083 ft / min	330 m / min
Cutting Cycle Time		3 sec
Control Handle	Single Trigger	Electric
Blade Lengths	9.5 in	241 mm
	10.5 in	267 mm
	11.5 in	292 mm
	13.0 in	330 mm
(for wide blade forequarter saw)	16.3 in	415 mm
(for forequarter saw)	18.0 in	457 mm
(for hog splitting saw)	21.9 in	556 mm
Overall Length (with 9.5 in blade)	31 in	787 mm
Weight	(Brisket Saws) 65 lbs	29.5 kg
	(Forequarter Saws) 77 lbs	34.9 kg

Equipment Selection and Accessories	Order Number
-------------------------------------	--------------

Model MG-1E	42 V, 3 phase, 50 Hz	4005059
	115 V, 3 phase, 60 Hz	4005080
	115 V, 3 phase, 50 Hz	4005057
	200 V, 3 phase, 50 Hz	4005066
	208 V, 3 phase, 60 Hz	4005065
	220 V, 3 phase, 60 Hz	4005061
	230 V, 3 phase, 60 Hz	4005060
	380 V, 3 phase, 50 Hz	4005055
	380 V, 3 phase, 60 Hz	4005062
	415 V, 3 phase, 50 Hz	4005067
	460 V, 3 phase, 60 Hz	4005056
	575 V, 3 phase, 60 Hz	4005069
	Model MG-1E-FQ Forequarter Saw	380 V, 3 phase, 60 Hz
Model MG-1E -FQ Forequarter Saw with Pivoting Hanger		
	230 V, 3 phase, 60 Hz	4005118
	460 V, 3 phase, 60 Hz	4005119
MG-1E-HS Hog Splitting Saw		
	42 V, 3 phase, 50 Hz	4005083
	230 V, 3 phase, 60 Hz	4005073
	460 V, 3 phase, 60 Hz	4005074
MG-1E-HS Hog Splitting Saw with Shower Head	380 V, 3 phase, 50 Hz	4005082
Blade (length)	9.5 in 241 mm	1023083
	10.5 in 270 mm	1023084
	11.5 in 290 mm	1023215
	13.0 in 330 mm	1023230
	18 in 457 mm	1023088
	21.9 in 556 mm	1023090
Balancer	(Brisket Saws) 4042047	(Forequarter Saws) 4042048



Products for the meat and poultry industry

Jarvis Products Corporation · 33 Anderson Road · Middletown, CT 06457-4926 · United States of America
 Telephone (860) 347-7271 · Fax (860) 347-9905 · sales@jarvisproducts.com · www.jarvisproducts.com